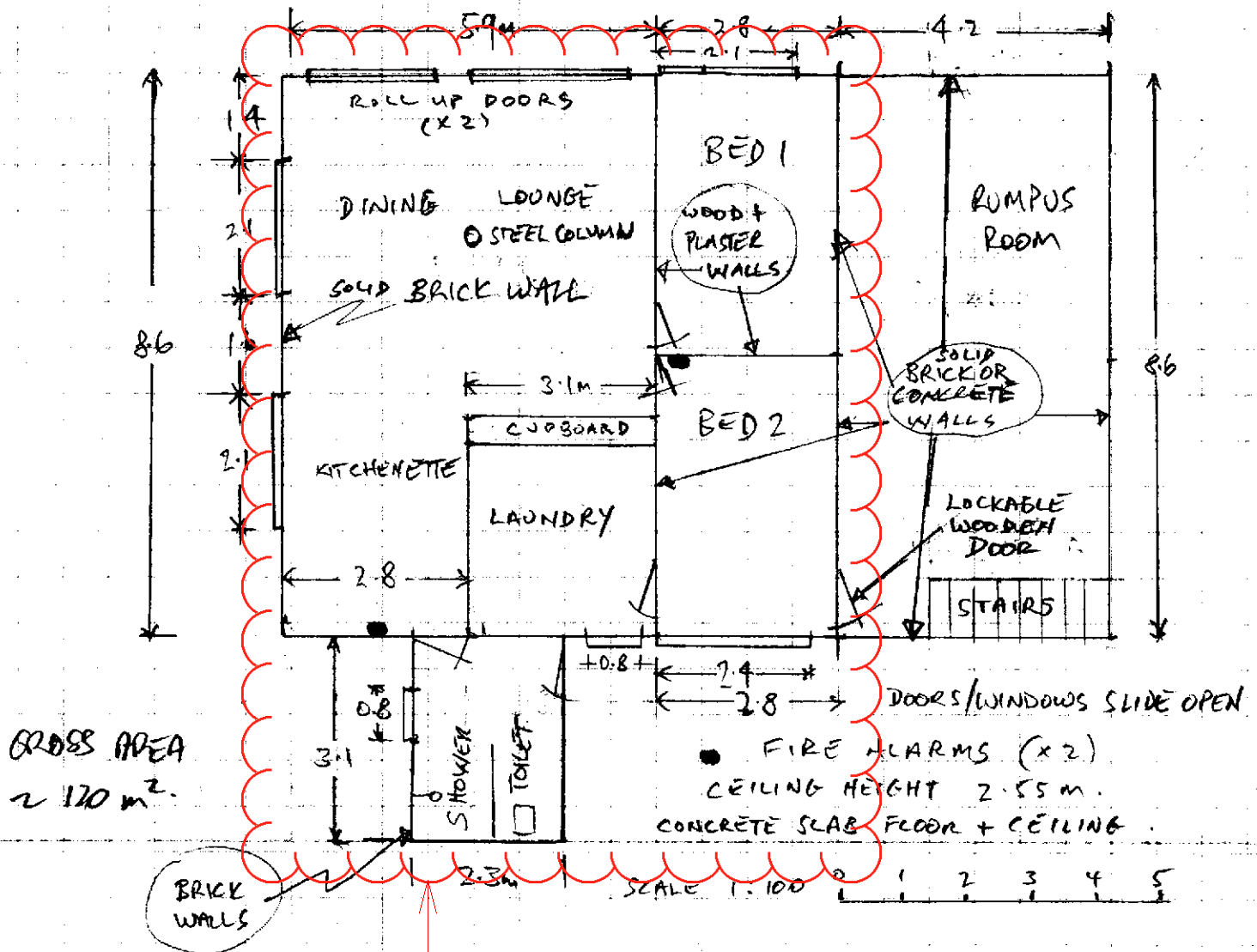


NAMBUCCA SHIRE COUNCIL
APPROVED DEVELOPMENT PLAN

Subject to the Conditions of Development Consent For
Development Application DA2018/254

Authorised Officer: GCC
Date of Consent: 13 February 2019

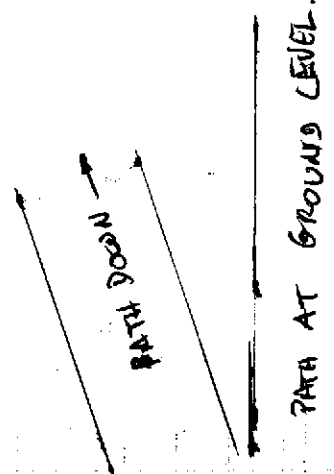
GROUND FLOOR PLAN 16 SHORT ST.



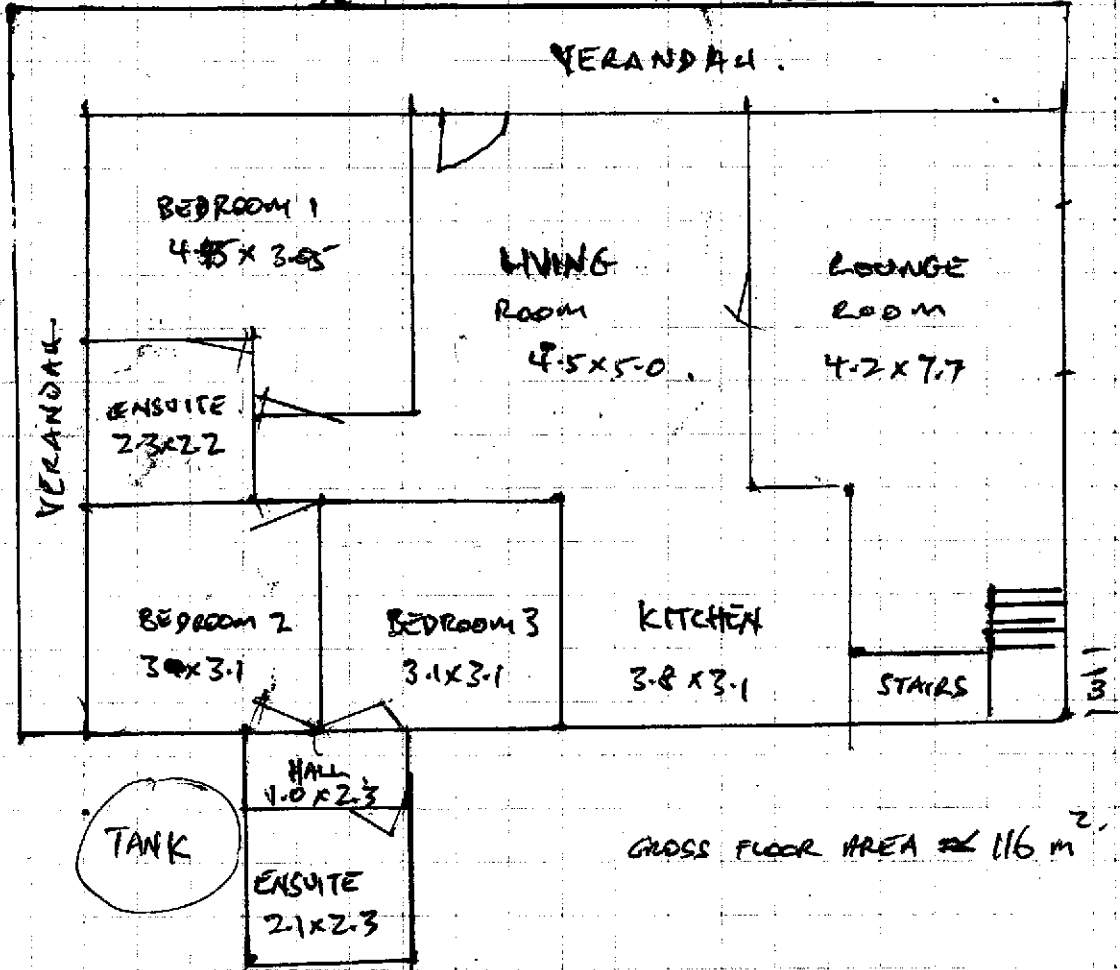
NAMBUCCA SHIRE COUNCIL
APPROVED DEVELOPMENT PLAN

Subject to the Conditions of Development Consent For
Development Application DA2018/254

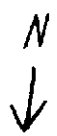
Authorised Officer: GCC
Date of Consent: 13 February 2019



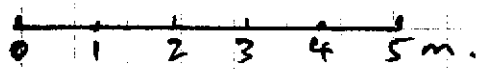
1st Floor Plan View:



FLOOR: SUSPENDED CONCRETE SLAB, (2.4m ceiling)



SCALE 1 TO 100
1cm = 1.0m.



16 SHOOT ST. NAMBUCCA HEADS

7/12/18 P. Welber