



# Smart Water Advice V2.0

July 2023

**SMART WATER**  
**ADVICE**

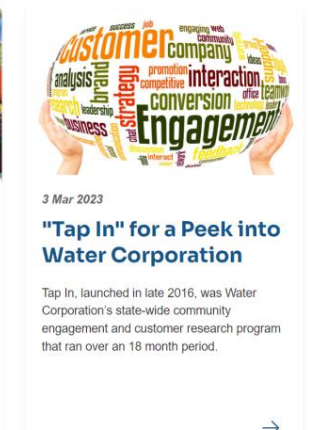
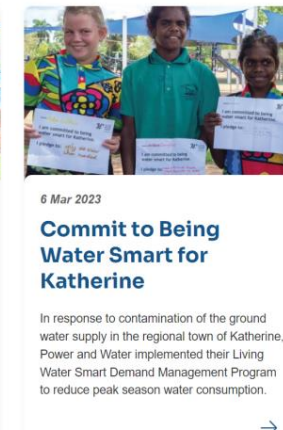
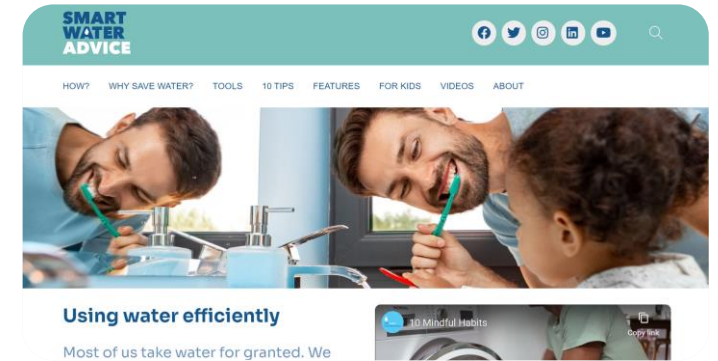


the water  
conservancy

# Smart Water Advice V2.0

## What's new?

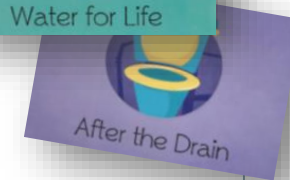
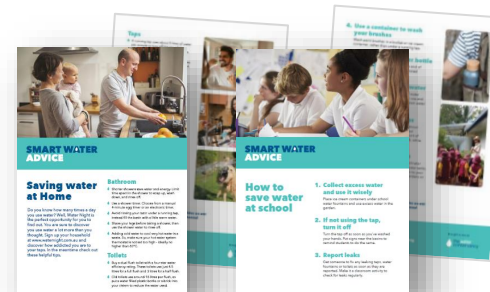
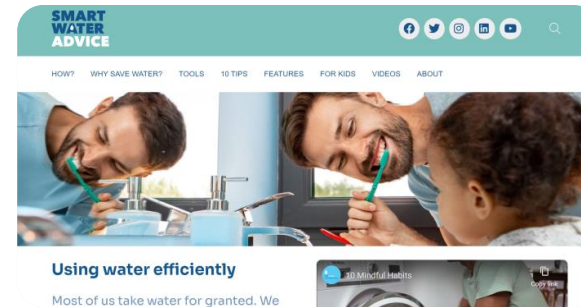
- ♦ [New website](#) - a modern refreshed 'look and feel' with diverse representative content.
- ♦ Brand [new video library](#) - 'How to...', 'Why save water, water saving tips', with shortened teasers for social media
- ♦ A suite of [non residential water efficiency case studies](#)
- ♦ ['Why save water' content](#) - videos, social memes and factsheets
- ♦ [Top tips page](#) for quick reference
- ♦ A new section highlighting the [water efficiency projects of the Smart Water Advice subscribers](#)
- ♦ An ['About' page](#) featuring all Smart Water Advice subscriber logos demonstrating the widespread support and collaboration from the water industry.



# Quick overview

- A website of water saving tips and advice for the home, garden and business
- Videos - 'How to', 'water saving tips'. 'Why save water'
- Shareables for social media
- Interactive tools - Plant finder, Blue House and Water Calculators
- Non-residential case studies
- Collateral including water saving bill inserts, factsheets and self audit packs
- Householder and hospitality materials and water saving kits
- Children's activities, story books and interactive educational tools
- Water industry water efficiency projects

**SMART WATER  
ADVICE**



 the water conservancy

# Getting Started

## How to use online content at [www.smartwateradvice.org](http://www.smartwateradvice.org)

Online content includes everything detailed on pages 5-24 of this guide. Direct your customers from your site to the Smart Water Advice site **OR** copy/paste relevant information into your own website **OR** use an embed code to pull content directly from a page into your site.

As a Smart Water Advice subscriber you are entitled to use videos, images and tips and advice on your own sites and social media channels.

## How to access and use collateral

By collateral we mean everything listed on pages 25-46 of this guide. Collateral can be rebranded and customised for you to distribute to your community. We can provide high res pdfs and/or print copies through our Waterless Printing Company approved by Smart WaterMark.

# Website content - home

Below is a list of all the water efficiency content that can be found at [www.smartwateradvice.org/how/home](https://www.smartwateradvice.org/how/home)

Parent page	Detail
<b>How/Home</b>  <a href="https://smartwateradvice.org/how/home/">https://smartwateradvice.org/how/home/</a>	<p><b>Bath</b></p> <ul style="list-style-type: none"><li>• Tips and advice on saving water in the bathroom</li><li>• Showers and Baths</li><li>• Choosing products - WELS</li></ul> <p><b>Toilets</b></p> <ul style="list-style-type: none"><li>• Tips and advice on saving water with toilets</li><li>• Choosing a water efficient toilet</li><li>• Use the half flush - video</li><li>• Leaking Toilets - video</li><li>• Choosing products - WELS</li></ul> <p><b>Taps</b></p> <ul style="list-style-type: none"><li>• Tips and advice on saving water with taps</li><li>• Replacing a tap washer - video</li><li>• How to install a flow controller - video</li><li>• Choosing products - WELS</li></ul> <p><b>Shower</b></p> <ul style="list-style-type: none"><li>• How to take shorter showers</li><li>• Choosing a water efficient showerhead</li><li>• How to change your showerhead</li><li>• Videos and factsheets</li></ul> <p><b>Laundry</b></p> <ul style="list-style-type: none"><li>• Tips and advice on saving water in the laundry</li><li>• Choosing a washing machine - WELS</li><li>• Videos and factsheets</li></ul> <p><b>Kitchen</b></p> <ul style="list-style-type: none"><li>• Tips and advice on saving water in the kitchen</li><li>• Choosing a dishwasher - WELS</li><li>• Washing up by hand or dishwasher?</li><li>• Scrape don't rinse - video</li></ul>

# Website content - garden

Below is a list of all the water efficiency content that can be found at <https://smartwateradvice.org/how/garden/>

Parent page	Detail
<b>How/Garden</b>  <a href="https://smartwateradvice.org/how/garden/">https://smartwateradvice.org/how/garden/</a>	<p>When to water?</p> <ul style="list-style-type: none"><li>• Best times to water</li><li>• Different types of plants</li><li>• Video content</li></ul> <p>How much to water?</p> <ul style="list-style-type: none"><li>• Watering tips</li><li>• Strategic watering</li><li>• Watering your lawn</li><li>• Smart Approved WaterMark</li></ul> <p>Watering</p> <ul style="list-style-type: none"><li>• Tips and advice</li><li>• Types of irrigation equipment</li><li>• Smart Approved WaterMark</li><li>• Video content</li></ul> <p>Rainwater Tanks</p> <ul style="list-style-type: none"><li>• Tips and advice on all things rainwater</li><li>• Benefits of rainwater tanks</li><li>• Choosing the right tank</li><li>• Installing your rainwater tank</li><li>• Maintaining your rainwater tank</li></ul> <p>Greywater</p> <ul style="list-style-type: none"><li>• Tips and advice on all things greywater</li><li>• Dos and Don'ts with greywater</li></ul> <p>Mulch</p> <ul style="list-style-type: none"><li>• Tips and advice on mulch</li><li>• 6 ways to mulch</li><li>• Different types of mulch</li><li>• Video and factsheets</li></ul>

# Website content - work

Below is a list of all the water efficiency content that can be found at <https://smartwateradvice.org/how/work/>

Parent page	Detail
<p><b>How/Work</b></p> <p><a href="https://smartwateradvice.org/how/work/">https://smartwateradvice.org/how/work/</a></p>	<p>Case studies - multi sector non-residential water efficiency case studies</p> <p>Commercial Laundries</p> <ul style="list-style-type: none"><li>• Breakdown of water use</li><li>• Best practice guidelines</li><li>• Using chemicals</li><li>• Ozone laundry</li></ul> <p>Hospitality</p> <ul style="list-style-type: none"><li>• Breakdown of water use in hospitality</li><li>• Tips and advice</li><li>• Case studies</li></ul> <p>Building Industry</p> <ul style="list-style-type: none"><li>• Water use in the building industry</li><li>• Benefits of saving water</li><li>• How to collect water</li></ul> <p>Textiles</p> <ul style="list-style-type: none"><li>• Water use in the textile industry</li><li>• Water saving tips</li></ul> <p>Nurseries</p> <ul style="list-style-type: none"><li>• Water use in the nursery industry</li><li>• Benefits of saving water</li><li>• How to save water</li></ul> <p>Food processing</p> <ul style="list-style-type: none"><li>• Water use in the food industry</li><li>• Benefits of saving water</li><li>• How to save water</li></ul> <p>Manufacturing</p> <ul style="list-style-type: none"><li>• Water use in manufacturing</li><li>• Benefits of saving water</li><li>• How to save water</li></ul> <p>Horticulture</p> <ul style="list-style-type: none"><li>• Water use in horticulture</li><li>• Benefits of saving water</li><li>• How to save water</li></ul> <p>Viticulture</p> <ul style="list-style-type: none"><li>• Water use in Viticulture</li><li>• Benefits of saving water</li><li>• How to save water</li></ul>

# Website content -pool, car, leaks

Below is a list of all the water efficiency content that can be found at <https://smartwateradvice.org/how/>

Parent page	Detail	
<b>How/pool</b> <a href="https://smartwateradvice.org/how/pool">https://smartwateradvice.org/how/pool</a>	<b>Pools</b> <ul style="list-style-type: none"><li>• Tips and advice on saving water in your pool</li><li>• Pool Covers</li><li>• Smart WaterMark Approved pool covers</li><li>• Pool Leaks</li><li>• Changing Pool behaviour</li><li>• Maintenance</li></ul>	<b>Leaks</b> <ul style="list-style-type: none"><li>• Avoiding leaks</li><li>• Checking if you have a leak</li><li>• Tips and advice on identifying and fixing leaks</li><li>• How to change a tap washer</li><li>• Videos and factsheets</li></ul>
<b>How/Car</b> <a href="https://smartwateradvice.org/how/car">https://smartwateradvice.org/how/car</a>	<b>Washing cars</b> <ul style="list-style-type: none"><li>• Tips and advice on washing your car at home</li><li>• Commercial car washes</li><li>• Smart WaterMark and the Water Saver Rating Scheme</li></ul>	
<b>How/leaks</b> <a href="https://smartwateradvice.org/how/leaks">https://smartwateradvice.org/how/leaks</a>		



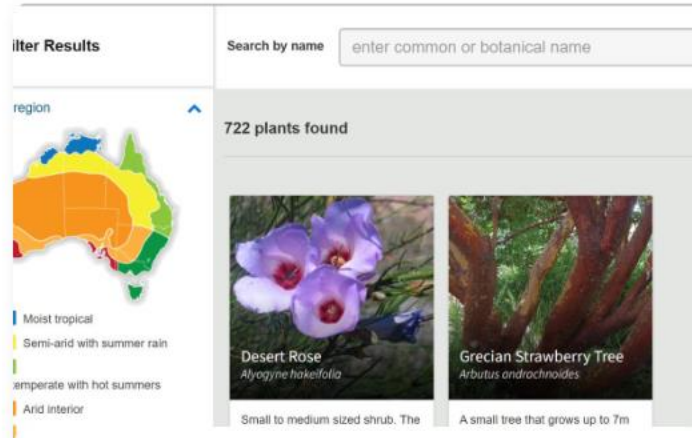
# Interactive tools

Below is a list of all the interactive tools that can be found at <https://smartwateradvice.org/tools/>



## Blue House

Spending two minutes in the Blue House helps you discover how easy it is to have a beautiful home whilst using water efficiently.



## Plant Finder

Redesigning your garden? Or just after some plants that need minimal water whilst looking beautiful in your garden. Discover what plants are right for your climate, soil type and maintenance level by exploring the Plant Finder.



## Water calculators

Explore each area of your home and calculate your water use. Compare your use against the average use in your area. Discover your water use goal and how to save.



# Interactive tools - embed codes

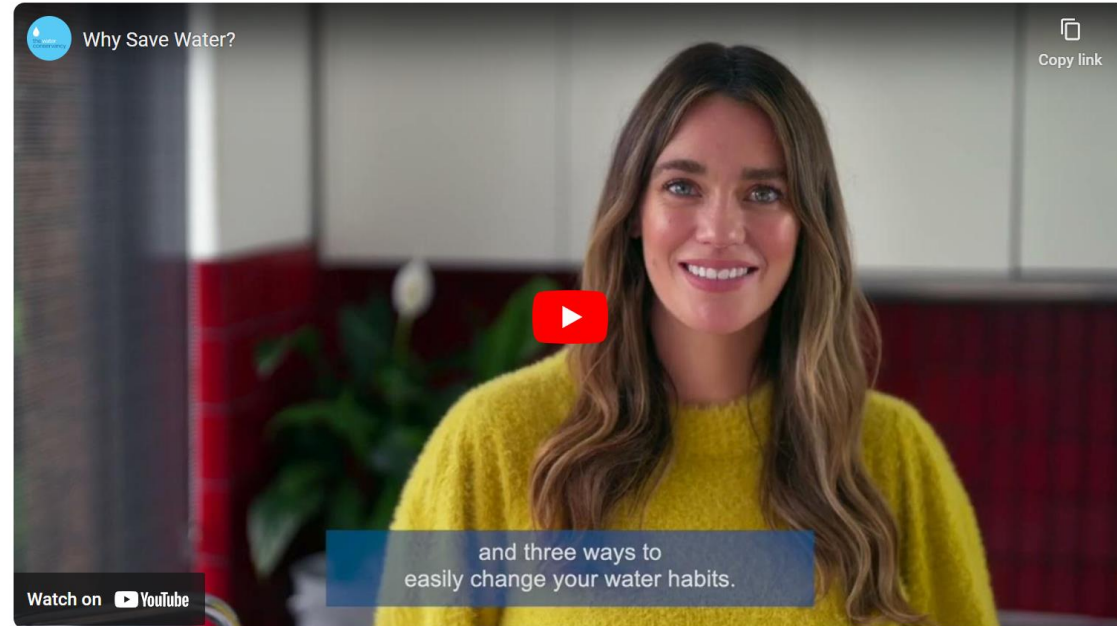
Asset	Descriptive text	URL & Embed Codes
<b>Plant Finder</b>	A tool to assist people in choosing water efficiency plants when designing a new garden.	<a href="https://smartwateradvice.org/tools/plant-finder/">https://smartwateradvice.org/tools/plant-finder/</a> <b>Embed Code:</b> <code>&lt;iframe src=https://www.smartwatermark.org/plant-finder_ scrolling="no" id="iFrameResizer0" style="overflow: hidden; height: 7161px;"&gt;&lt;/iframe&gt;</code>
<b>Blue House</b>	An innovative water efficiency experience for Consumers. Viewers are taken on an immersive journey through a water efficient home, seeing advice and products as they go. It's an interactive experience.	<a href="https://smartwateradvice.org/tools/blue-house/">https://smartwateradvice.org/tools/blue-house/</a> <b>Embed Code:</b> <code>&lt;div style="position: relative; width: 100%; height: 0; padding-bottom: 56.25%;"&gt;&lt;iframe style="position: absolute; top: 0; left: 0;" width="100%" height="100%" src=https://embed.wirewax.com/8130539/?noShare=true&amp; frameborder="0" scrolling="yes" allowfullscreen&gt;&lt;/iframe&gt;&lt;/div&gt;</code>
<b>Water calculators</b>	See where and how you use and waste water at home with these fun and easy water calculators.	<a href="https://smartwateradvice.org/tools/water-calculators/">https://smartwateradvice.org/tools/water-calculators/</a> <b>Embed Code:</b> <code>&lt;iframe src=https://smartwatermark.org/watercalculator/VIC/ width="1200" height="1000"&gt;&lt;/iframe&gt;</code> <code>&lt;iframe src=https://smartwatermark.org/watercalculator/NSW/ width="1200" height="1000"&gt;&lt;/iframe&gt;</code>
<b>Shower song playlist</b>	Choose a 4 minute tune to shower to and see if you can be washed and dried before it finishes!	<a href="https://open.spotify.com/playlist/57ICRI03INKkdOmFSttBtw?si=D7kir_rXQcOu_FliuG7Y0g">https://open.spotify.com/playlist/57ICRI03INKkdOmFSttBtw?si=D7kir_rXQcOu_FliuG7Y0g</a> <b>Embed Code:</b> <code>&lt;iframe src="https://open.spotify.com/embed/playlist/57ICRI03INKkdOmFSttBtw" width="300" height="380" frameborder="0" allowtransparency="true" allow="encrypted-media"&gt;&lt;/iframe&gt;</code>

# Website content - why save water

Below is a list of all the water efficiency content that can be found at <https://smartwateradvice.org/why-save-water/>

## Why save water

- Presented by Laura Wells
- Three water saving facts
- Three reasons to save water
- Three ways to save water
- Why save water social media memes





# Website content 34 non residential case studies

[View all case studies](#)



17 Apr 2023

## **Mars Snackfood**

Mars Snackfood is a pet care, confectionary, and Food Brands Company.



17 Apr 2023

## **Joe White Maltings**

Joe White Maltings Ltd is a malting company that exports 33,110 tonnes of malt for breweries (mainly in Vietnam, Thailand and Korea).



17 Apr 2023

## **Cadbury Schweppes**

Cadbury Schweppes produces a range of carbonated and still beverages, juices and alcoholic beverages, including their classic mixers, mineral waters and iconic lemonade in a process that uses most of the drinking water entering the site.



20 Apr 2023

## **Old Colonists**

The Old Colonists' Association of Victoria is a not-for-profit organization that operates multiple aged-care facilities. The Fitzroy site consists of 135 individual cottages suitable for single residents and couples.



20 Apr 2023

## **Sovereign Hill**

Sovereign Hill is one of Victoria's leading tourist attractions and outdoor museums. It attracts nearly 500,000 visitors each year, including around 120,000 school children.



20 Apr 2023

## **Ballarat Grammar**

Ballarat Grammar is one of the region's oldest, independent Anglican Church schools. It has 1350 students, including 220 boarders.



20 Apr 2023

## **Hyatt Regency Sanctuary Cove**

In the space of four years, The Hyatt has reduced its water use by half!



20 Apr 2023

## **Dame Phyllis Frost Center**

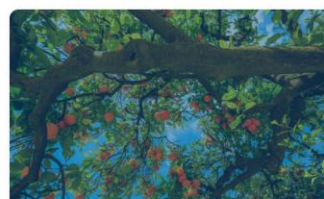
Originally known as the Deer Park Metropolitan Women's Correctional Centre, the Dame Phyllis Frost Centre is a minimum to maximum security prison that houses up to 260 women prisoners, most of whom prepare their own meals and do their own housework.



20 Apr 2023

## **Maryborough Hospital**

Maryborough Hospital is one of the Maryborough District Health Service's (MDHS) three campuses. It has 143 beds.



24 Apr 2023

## **Golden Heights Citrus Orchard**

Stuart Pettigrew originally came from the Riverland. Stuart has a commercial interest in making sure the rivers are healthy because it means that he can continue his production on the farm. Plus, he has a personal reason: he loves the river!



24 Apr 2023

## **Victoria Wool Processors**

Victoria Wool Processors receives bales of wool from farms all over Australia.

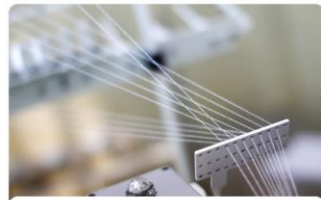


24 Apr 2023

## **John Rapisarda, Vineyard Operator**

John's vineyard is comprised of all wine grapes—about 20.5 hectares in total.

# Website content Water utility projects



17 Apr 2023

## Eureka Linen

Eureka Linen is a business unit of Ballarat Health Services and has been operating since 1979.



9 Mar 2023

## SA Water's Smarts

SA Water has worked with businesses across South Australia to install smart meters for the purpose of helping them better manage their water use.



9 Mar 2023

## Leak Prevention in Our Communities

Almost 50,000 customer water meters have been checked for signs of on-lot leaks in Darwin, Katherine and Alice Springs saving over a billion litres of water



6 Mar 2023

## The Lower Hunter Region Loves Water

Hunter Water's Love Water campaign encourages customers to work with the utility and wider community to reduce water consumption. Customers in the Hunter Water region are using on average 191 litres per day, however this could be reduced by 10%.



6 Mar 2023

## Commit to Being Water Smart for Katherine

In response to contamination of the ground water supply in the regional town of Katherine, Power and Water implemented their Living Water Smart Demand Management Program to reduce peak season water consumption.



3 Mar 2023

## "Tap In" for a Peek into Water Corporation

Tap In, launched in late 2016, was Water Corporation's state-wide community engagement and customer research program that ran over an 18 month period.



9 Mar 2023

## 'myh2o' is For Your Use

It's been described as award winning, cost effective and cutting edge. When Mackay Regional Council in North Queensland introduced smart metering, it was to help slow investment demands. However, they also found that it changed their community's culture of water use with 'myh2o.'



6 Mar 2023

## Keeping Water Secure

The Water Security program is Seqwater's plan for providing the region's drinking water over the next 30 years, including during times of drought and flood. In 2017, Seqwater released version 2 of the Water Security Program, which includes a revised Drought Response Plan. The plan introduces a drought readiness phase to help better prepare the region for the prospect of drought.



6 Mar 2023

## Sydney Water Sticking to the BASIX

The Building Sustainability Index (BASIX) is one of the strongest sustainable planning measures to ever be undertaken in Australia.



9 Mar 2023

## Communal Water Saving

The Community Rebate Program began in 2015 and has assisted around 10,000 customers across Victoria saving \$600,000 a year in water bills and around 178 Megalitres in water. The program is expected to assist an additional 5,000 customers over the next two years.



9 Mar 2023

## Water Efficiency in Your Household

The Water Efficiency Labelling and Standards (WELS) scheme is a national scheme to help Australians save water in their homes. WELS reduces demand for drinking water by informing consumers about water efficiency at the point of sale.



9 Mar 2023

## Australia's New High-Tech Sustainability

Using their own land, South East Water has teamed up with Villawood Properties on a unique residential development collaboration. Built on a former wastewater treatment plant site, Aquarevo will be the most water and energy efficient residential community in Australia. Residents will enjoy the benefits of smart design and leading edge, intelligent water solutions.

**SMART WATER  
ADVICE**

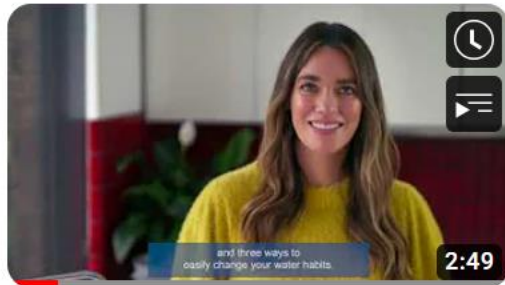
# Videos

## Why save water?

[Watch videos at Smart Water Advice](#)

[Watch videos on YouTube](#)

[Instructions on downloading videos](#)



Why Save Water?



Why Save Water (New Zealand)



Why Save Water (Square)

## How to...



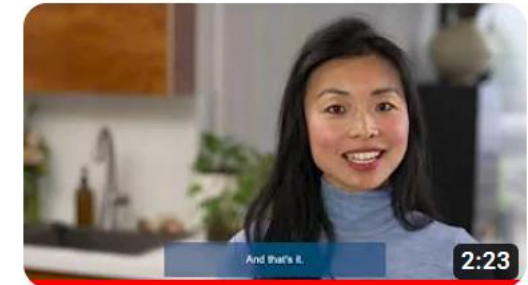
How to Check if You Have a Leak



How to Change a Tap Washer



How to Install a Flow Controller on Your Tap



How to Change a Showerhead

# Videos

## 10 Mindful habits

[Watch videos at Smart Water Advice](#)

[Watch videos on YouTube](#)

[Instructions on downloading videos](#)



**SMART WATER ADVICE** always use a full load in the washing machine



**SMART WATER ADVICE** When brushing your teeth or washing your hands



**SMART WATER ADVICE** Only water in the morning and evening



**SMART WATER ADVICE** Before watering the garden



**SMART WATER ADVICE** A drip a second wastes 12,000 litres per year.



**SMART WATER ADVICE** Check that your water meter stops overnight



**SMART WATER ADVICE** When buying new products



**SMART WATER ADVICE** Could you rinse recyclables in that water or use the greywater safely on your garden?



**SMART WATER ADVICE** use a timer to keep showers to a minimum



**SMART WATER ADVICE** use a bucket and trigger nozzle on the grass, not on the driveway



# Videos

## Walter Smart and Friends for Primary schools

[Watch videos at Smart Water Advice](#)

[Watch videos on YouTube](#)

[Instructions on downloading videos](#)



WS Use water wisely



WS Shorter showers



WS Scrape don't rinse



WS half flush toilet



WS Full load washing machine



WS Brushing your teeth

# Images

Below are links to all the photos you can access in the Sharepoint library. Images are sorted by type, by resolution and then by free use and SWA associated use.

## Image Links

- ◆ Laundry
- ◆ Work
- ◆ Plants
- ◆ Rainwater Tanks
- ◆ Leaks
- ◆ Evaporative Coolers
- ◆ Water Meters
- ◆ Gardens
- ◆ Mulch
- ◆ Watering
- ◆ Car Washing
- ◆ Hard Surfaces Kitchens
- ◆ Taps
- ◆ Irrigation



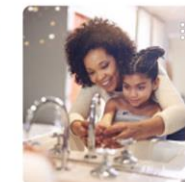
Hard surfaces  
6 items · Shared



Kitchens  
12 items · Shared



Lifestyle  
20 items · Shared



Bathrooms  
18 items · Shared



Mulch  
20 items · Shared



Watering  
22 items · Shared



Car Washing  
28 items · Shared



Networking  
4 items · Shared



Products  
142 items

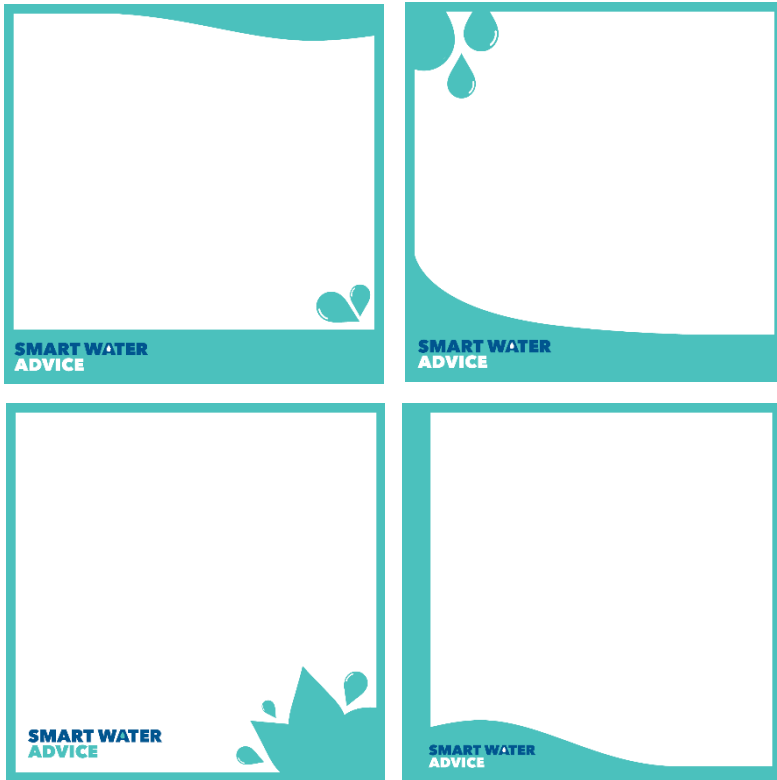


Promotion Entries  
13 items

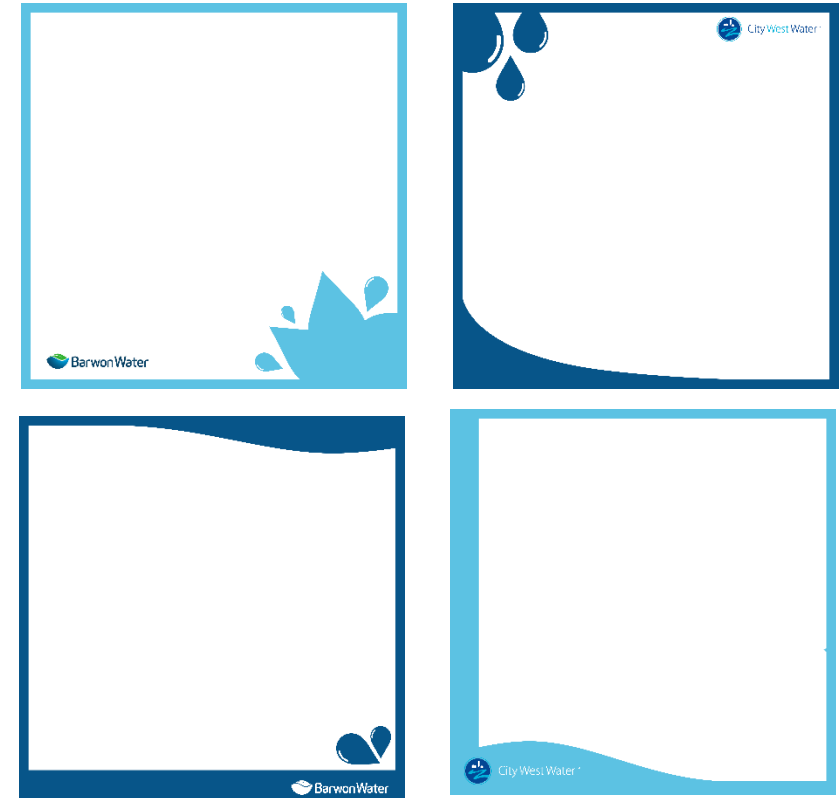
# Social Media

# Editable & Brandable Social Tile Frames

All frames are supplied with transparent backgrounds and can be overlaid onto any image of your choosing from your own libraries or the Smart Water Advice Library. We only feature a few suggestions in this pack as examples.



Smart Water Advice Branded



Water Business Branded

# Image Suggestions

All frames are supplied with transparent backgrounds and can be overlaid onto any image of your choosing from your own libraries or the Smart Water Advice Library. We only feature a few suggestions in this pack as examples.



# Water Facts

[View all Smart Water Advice collateral](#)

**Water Facts**

**How water gets to your home**

**SMART WATER ADVICE**

**Water Facts**

**A dripping tap wastes 12,000 litres a year**

**SMART WATER ADVICE** 42,000 litres backyard pool

**Water Facts**

**A 10 minute shower uses 90 litres**

**SMART WATER ADVICE** 10 litres bucket

**Water Facts**

**Brushing your teeth uses 7.5 litres**

**SMART WATER ADVICE** 500ml bottle

**Water Facts**

**A dripping tap wastes 12,000 litres a year**

**CityWest Water** 42,000 litres backyard pool

**Water Facts**

**A leaky loo wastes 96,000 litres a year**

**SMART WATER ADVICE** 42,000 litres backyard pool

**Water Facts**

**A full load of laundry uses 50-150 litres**

**SMART WATER ADVICE** 300 litres bath tub

**Water Facts**

**One fully loaded dishwasher uses 20 litres**

**SMART WATER ADVICE** 10 litres bucket

**Water Facts**

**A full flush uses at least 4.5 litres**

**SMART WATER ADVICE** 500ml bottle

**Water Facts**

**A full load of laundry uses 50-150 litres**

**BarwonWater** 300 litres bath tub

Smart Water Advice Branded

Water Business Branded

# Social Tiles/Magnets/Stickers

**Wash the car on your lawn**  
not on the driveway

**Plants**  
Save water with a **drip watering system** instead of sprays

**Wet wipes** are rubbish. Don't block it. **Bin it!**

**A load of dishes** uses about **20 litres** of water, much less than hand washing  
**Run your dishwasher full**

**A load of laundry** uses about **50-150 litres** of water, depending on the age and make of machine  
**Run your washing machine full**

**Save water by avoiding night time flushing**

**Use a trigger nozzle on your garden hose**

**Remember to turn off taps when washing hands** and save up to 5 litres of water a minute

**Turn the tap off when you brush your teeth** and save as much as 5 litres of water a minute

When choosing a **washing machine** select one that adjusts water levels and cycle times depending on the load

**1 drip a second** wastes more than **12,000 litres**  
**Fix dripping taps**

**Dripping taps** can waste **12,000 litres** a year so **fix yours today**

**Think before you pull the plug**  
...could your **greywater** be used again?

**Use a bucket in the shower** and save up to 9 litres a minute

**When bathing your pets, run a shallower bath** than you would for yourself.

**Choose the half flush** and save up to 1.5 litres of water a flush

**10 minute showers** can use up to **90 Litres of water**  
Keep showers to **4 minutes**  
Use a shower timer

**A leaking toilet** can waste more than **95,000 litres** a year  
**Fix leaking toilets**

**Save water Save money**

**Mulch your veggie patch and flowerbeds** to reduce moisture loss

**Install a rainwater tank** and connect it to the laundry & toilets

**Watering**  
Check the weather and only water **between 6pm & 10am**

**Shower with a 4 minute song** to keep your showers short

**Drink at least 2 litres of water** a day to be healthy, help your brain function well and to keep hydrated when you exercise or if it's hot

**Group plants with similar watering needs** and water when needed

**SMART WATER ADVICE** [www.smartwateradvice.org](http://www.smartwateradvice.org)

# CALD Graphics



Smart Water Advice: Turn off the tap when brushing teeth and save as much as 16 litres a minute.  
#smartbrushing #smartwatertip



Smart Water Advice: Dishwashers can be more efficient than handwashing but remember to run it with a full load.  
#fullisfantastic #smartwatertip



Smart Water Advice: Run your washing machine with a full load and save as much as 10 litres per wash.  
#fullisfantastic #smartwatertip



Smart Water Advice: Keep showers to 4 minutes and save as much as 9 litres a minute.  
#shorterissmarter #smartwatertip



Smart Water Advice: Be a fabulous flusher and use the half flush - saving you 35 litres a year.  
#fabulousflusher #smartwatertip



Smart Water Advice: Scrape your dirty plates instead of rinsing them when loading the dishwasher. #scrapedonrinse #smartwatertip



# Resource Packs

Available to all Smart Water Advice Subscribers

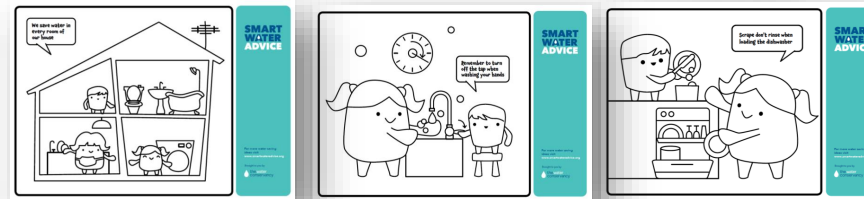
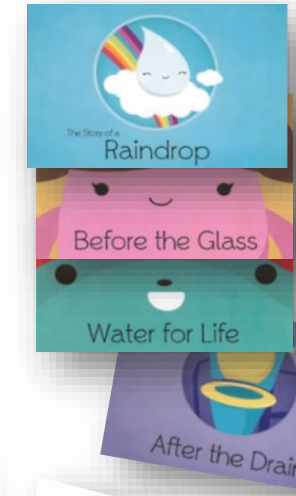
High resolution PDFs can be supplied for all existing materials with your logo added. We can print these for you too. All items in resource packs are available separately too.



# School Packs

- 💧 Factsheets
- 💧 Colouring sheets
- 💧 Water Story Books
- 💧 Access to Blue House
- 💧 School Water Audit Worksheets

Fulfilment can be arranged including postage and packaging on request



# Self Water Audits

- 💧 School and Home self audit worksheets help students and householders to identify leaks and manage their water better.
- 💧 There are no better advocates for water challenges and tasks than children.
- 💧 As such SAWM have created school and Home Self Audit worksheets for children to complete with their guardians or teachers.

### Home Water Efficiency Audit

Do you know how much water your household uses? A home water audit like this can help. By monitoring how much water you use and fixing leaks promptly, you can save water and money. Just follow the steps and add the information you collect to the Audit Form as you go.

**STEP 1**  
**How Much Water Do We Use?**

- Find out where your local water supply comes from by checking your rates notice (water bill).
- Check your water meter which is typically located in the ground outside, towards the front of the property.
- Check how much water your home is using each month by making monthly water meter readings to compare to monthly bills. You can quickly detect any unexplained increases in water use that might indicate a possible leak.

**STEP 2**  
**Where Do We Use Water?**

- Complete the Household Checklist below using the water usage calculator.

Water Use	No. of days in the month (A)	No. of days per week (B)	Litres of water per hour (C)	Total per week (AUDIT)
Toilet				
Shower				
Bath				
Tooth cleaning				
Shaving				
Washing hands				
Drinking				
Washing dishes				
Dishwasher				
Washing machine				
Inside cleaning such as showers, floors				
Washing car/wheel boots				
Washing pets				
Watering gardens/lawns				
Outside cleaning such as driveway, balconies				
Pools/spa water features				
Other				
<b>Total</b>				

You can use additional sheets of paper if you need more space for all your water using places.

**SMART WATER ADVICE** Find out more at [www.smartwateradvice.org](http://www.smartwateradvice.org) Brought to you by **the water conservancy**

### School Water Efficiency Audit

#### Instructions & Activities

Schools use a lot of water and often water is wasted without our knowledge. Students like you, can help to see if schools are water efficient and where fixes and savings can be made by doing this Water Efficiency Audit for your school.

Just follow the steps below, have fun with your teachers doing some of the activities and add the information you collect to the Audit Form attached.

**STEP 1**  
**How Much Water Do We Use?**

- Find out where your local water supply comes from by asking teachers, or using the internet or library resources.
- Work out how much water your school is using each week by making a daily water meter reading for 1 week.
- Your teacher can find out the readings for the weekend and can confirm what the water was used for when school was closed.
- Add your findings to Section 1 of the Audit Form.

**STEP 2**  
**Where Do We Use Water?**

- Take a walk around your school to find all the places where water is used. Some are more obvious than others, so make sure you explore your school and its grounds for water users and potential water-wasters! Some places you explore might include: Bathrooms, Classrooms, Playgrounds, Gyms, Halls, Gardens, Sports Fields, Lawns, Water Fountains etc...
- Add your big list of places to the table in Section 2 of the Audit Form.
- Add to the table if you saw a leak in any of the places. You and your teacher can check for leaks with taps and toilets.

**ACTIVITY**  
**READING THE WATER METER WITH YOUR TEACHER**

- This activity depends on being able to safely access the water meter.
- Make sure the area is checked for spiders, snakes, etc, prior to checking it.
- Take daily water meter readings at the same time each day for 5 days.

**ACTIVITY**  
**HOW MUCH IS THAT IN LITRES?**

- Place a measuring cup (that measures millilitres) under the leaky tap and start a stop-watch.
- Leave the cup under the leaky tap for 15 minutes.
- Mark down how many millilitres were captured, then pour the water into a measuring jug to see how many litres you have!
- Together you can work out how much water would be wasted in 1 day, in 1 week and in 1 year.

**SMART WATER ADVICE** Find out more at [www.smartwateradvice.org](http://www.smartwateradvice.org) Brought to you by **the water conservancy**

# Hospitality Packs

- ◆ Reception cards
- ◆ Door hangers
- ◆ Shower hangers
- ◆ Stickers
- ◆ Reusable glass water bottles
- ◆ 3 and 4 minute shower timers
- ◆ Music compilation playlist of 4 minute shower songs

Fulfilment can be arranged including postage and packaging on request

**SMART WATER  
ADVICE**



# Individual Items

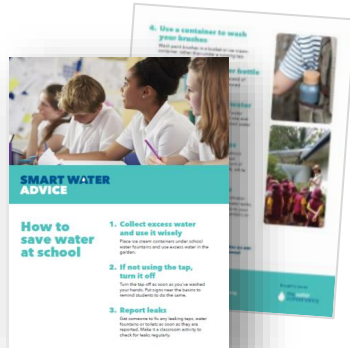
Printed by our Smart WaterMark approved waterless printer, FishPrint



# Factsheets

Available in the following sizes:

A4 2pp



# SMART WATER ADVICE



## SMART WATER ADVICE

### How to save water at school

#### 1. Collect excess water and use it wisely

Place an empty container under school water fountains and use excess water to do the garden.

#### 2. If not using the tap, turn it off

Turn the tap off as soon as you've washed your hands. Let taps near the bins to record students to do the same.

#### 3. Report leaks

Get someone to fix any leaking taps, water fountains or toilets as soon as they are reported. Make it a classroom activity to check for leaks regularly.



## SMART WATER ADVICE

### Saving Water with Pools

Uncovered pools can lose up to 55,000 litres annually through evaporation which is a big leak. Using a solar pool cover can help you to stop 97% evaporation. This is a great for water saving but is also helpful for reducing evaporative chemical consumption by 30-40%.

1. Choose a Smart WaterMark approved pool cover to make significant water and energy savings.
2. SmartWaterMark approved pool covers that adhere to Swimming Pool and Spa Association (SPASA) standards. These covers are durable and fit 95% of all pool shapes and sizes in the south-eastern states.
3. SmartWaterMark approved pool covers are:
  1. Pool covers reduce evaporation.
  2. Pool covers reduce expensive chemical and salt evaporation.
  3. A general pool cover conserves water and helps to save 97% on energy bills and greenhouse gas.
  4. Covers help reduce the amount of chemicals that run into rivers and the ocean.
  5. You can save money on your pool chemicals without increasing energy costs.
  6. Save time and energy cleaning the pool. Covers keep water cleaner at the same time as you clean, leave out your pool.



## SMART WATER ADVICE

### Saving water in the laundry

15-20% of all water consumed in the home is used in the laundry. In addition to water, washing machines also use a large amount of energy and detergents.

- By law, all washing machines must carry a WELS (The Water Efficiency Labelling and Standards Scheme) label which gives a star rating for the machine's water efficiency. The more stars, the less water the machine uses per wash. The label also provides water consumption in litres per wash and energy use. All machines with 4 star efficiency are energy efficient. To maximise your total water, you should select a machine with a WELS 4 star rating that is high in both water and energy efficiency.
- #### Selecting a washer
1. Choose a water efficient front-loading washing machine.
  2. Check the water efficiency performance of any product before buying.
  3. Look for washing machine features such as four or more WELS star-rating.



## SMART WATER ADVICE

### Saving water at Home

Do you know how many times a day you use water? Well, Water Right is the perfect opportunity for you to find out. You are sure to discover you use water a lot more than you thought. Sign up your household at [www.waterright.com.au](http://www.waterright.com.au) and discover how addicted you are to your taps. In the meantime check out these helpful tips.

#### Bathroom

1. Shower at lower water and energy. Limit shower to 5-10 minutes. Turn off water when soaping hair.
2. Use a shower cap. Choose from a reusable Antisludge egg-tray or an electronic timer.
3. Avoid using your hair while soaping hair. Instead fill the basin with a little warm water.
4. Stand on a step before soaping hair so you use the shower water to rinse off.

#### Toilets

1. Buy a dual flush toilet with a flusher water and energy label. These toilets use just 4.5 litres for a full flush and 3 litres for a half flush.
2. Do not flush anything other than toilet paper. A full flush of toilet paper or a half flush of toilet paper is better than no flush at all. This helps to reduce the water used.



## SMART WATER ADVICE

### Saving water in the garden

Smartwater tanks save water and help save the environment.

1. Smartwater tanks provide flexibility for garden watering.
2. You can also protect your rainwater tank to your filter water before the house and garden.
3. Using rainwater instead of mains water will reduce your water volume charges on your water bill.

#### Use Mulch

- Mulch can reduce evaporation of water from your lawn.
- Mulch suppresses weeds, adds nutrients and reduces soil and soil movement.

#### Only water when needed

- Water your lawn only when it is needed. If it is a moist lawn, you don't need to water.
- Check the weather forecast. If there's rain, you don't need to water for 24 hours.
- Check the soil moisture. If it's dry, you need to water.
- Use a soil moisture meter to check soil moisture levels.
- Use a soil moisture meter to check soil moisture levels.
- Use a soil moisture meter to check soil moisture levels.



## SMART WATER ADVICE

### Early Leak Detection

You can lose a few litres of water an hour from a slow dripping tap. If the leak is from a hot water pipe or a pumped water supply, you'll also be facing a significant energy cost.

1. Choose a smart meter when you are not using any appliances that use water, for example:
  1. Shower.
  2. Dishwasher.
  3. Washing machine.
  4. Toilet.
  5. Hot water tap.
2. Allow all tanks and cisterns to completely fill (to 100 litres or 100 gallons).
3. Turn on the water meter reading (both the back and the red digits).
4. Leave all appliances turned off overnight.
5. Check the meter reading first thing in the morning before you use any water.
6. Check the meter reading at the end of the day. If you have a leak, the number will have changed. If you have a leak, the number will have changed. If you have a leak, the number will have changed.
7. If you suspect you have a major leak, you'll probably need help from a plumber with specialist equipment that may not be available.

A continuously running toilet can waste up to 96,000 litres of water per year, yet toilet leaks often go undetected on the water meter. This makes early detection and repair even more important.



## SMART WATER ADVICE

### Rainwater Tank Troubleshooter

Problem	Root Cause	Possible Solution
Pressure is building up and overflowing	The pump will turn on when the pressure in the storage tank is too high. This is normal. Check the pump setting to ensure it's set to the correct pressure. The pressure in the storage tank will only go down if there is a tap open or a leak in the system.	Check all taps for leaks. If the water meter is connected to the storage tank, check all taps for leaks. If the water meter is not connected to the storage tank, check all taps for leaks. If the water meter is not connected to the storage tank, check all taps for leaks.
Pump constantly reactivates	The pump will operate continually if there is no water in a storage tank. If this is not the case, the pump controller may be faulty.	Check the water meter to ensure it's set to the correct pressure. Check the pump controller to ensure it's set to the correct pressure. Check the pump controller to ensure it's set to the correct pressure.



## SMART WATER ADVICE

### Saving water with rainwater tanks

Rainwater tanks save water and help save the environment.

1. Rainwater tanks to catch and use water that would otherwise run down the stormwater drain.
2. Rainwater tanks help to reduce the amount of energy used in pumping and pumping water.
3. Take an opportunity to test your tank to ensure it's working efficiently.
4. Rainwater tanks help to reduce the amount of energy used in pumping and pumping water.

#### Rainwater tanks provide flexibility for garden watering

1. Rainwater tanks help to reduce the amount of energy used in pumping and pumping water.
2. Rainwater tanks help to reduce the amount of energy used in pumping and pumping water.
3. Rainwater tanks help to reduce the amount of energy used in pumping and pumping water.



## SMART WATER ADVICE

### Saving Water with Mulch

Feeding your garden is essential to creating healthy and maintaining a water efficient garden.

1. Mulch keeps your soil cool, suppresses weeds, adds nutrients, and reduces soil and soil movement.
2. Mulch use reduces evaporation from soil by up to 70%.
3. Any mulch is better than no mulch.



## SMART WATER ADVICE

### Saving water at Work

Do you know how many times a day you use water? Well, Water Right is the perfect opportunity for you to find out. You are sure to discover you use water a lot more than you thought. Sign up your household at [www.waterright.com.au](http://www.waterright.com.au) and discover how addicted you are to your taps. In the meantime check out these helpful tips.

1. A water saving showerhead can save up to 5,000 litres of water per year. You can save up to 10,000 litres a year. There's a lot of water in that tap. It's a lot of water. It's a lot of water. It's a lot of water.
2. Turn off the tap when you're brushing your teeth.
3. Turn off the tap when you're brushing your teeth.
4. Turn off the tap when you're brushing your teeth.



## SMART WATER ADVICE

### How to fit efficient showerheads

The easiest way to save water in the shower is to take a short one. However, if you fit a water efficient showerhead you'll save litres of thousands of litres of water a year and reduce energy costs and greenhouse gas. A water efficient showerhead can save a family of four up to 50,000 litres per year.

- You will need:
1. An adjustable wrench.
  2. A screwdriver.
  3. Sealant.

#### How to replace a showerhead

1. Prepare the showerhead. Remove the old showerhead. Use a screwdriver to remove the old showerhead. Use a screwdriver to remove the old showerhead.
2. Prepare the new showerhead. Use a screwdriver to remove the old showerhead. Use a screwdriver to remove the old showerhead.
3. Attach the new showerhead. Use a screwdriver to remove the old showerhead. Use a screwdriver to remove the old showerhead.
4. Check the threads with seal and dry the area thoroughly.



## SMART WATER ADVICE

### Connecting your rainwater tank

Rainwater tanks can be connected to the toilet and laundry of a home. This helps to maximise the benefits from the rainwater tanks as water can be used year around and not just during the dry months of the year.

1. All plumbing work must be carried out by a licensed plumber and a plumbing certificate of compliance must be issued by the council. The council may require you to provide a copy of the plumbing certificate to the council.
2. The tank is required to be connected to the toilet or cold water under the laundry. You need to be able to switch over to hot water if the work you do.

# Bill Inserts

Available in the following sizes:

DL 2pp (Outdoor) *Below left*

DL 6pp Roll-fold *Right*



**SMART WATER ADVICE**

Did you know that more than 50% of the water we use at home is on the garden?

The great news is that we can enjoy a beautiful garden at the same time as using water wisely and observing local water restrictions.

- The best time to water your garden is within the restriction times between 6pm and 8pm on your allocated day when the sun's rays aren't so strong.
- Always use a trigger nozzle so no water is wasted.
- Plant water-conservative plants and use only enough water to match the needs of the plants.
- Using mulch helps save water by keeping soil cool to reduce evaporation by 75%.
- Save water - Save Money.

**Be waterwise in your garden.**

For more water saving ideas visit [www.smartwateradvice.org](http://www.smartwateradvice.org)

Brought to you by **the water conservancy**



**Save Water Save Money**

Cutting back on your water use not only saves water, but also saves energy, money and the environment. This leaflet has been designed to provide you with some easy ways to save water in your home and garden.

**SMART WATER ADVICE** For more water saving ideas contact your local council or visit [www.smartwateradvice.org](http://www.smartwateradvice.org)

**SMART WATER ADVICE**

Brought to you by **the water conservancy**

Helping you save water [www.smartwateradvice.org](http://www.smartwateradvice.org)

Brought to you by **the water conservancy**

**Great water saving tips for your home**

A 10 minute shower can use up to 90 litres of water! Try cutting a minute off your shower. Saving hot water not only saves water but energy and money too.

Turn the tap off when brushing your teeth. Wet your brush and use a glass for rinsing.

Fit a water efficient showerhead for a water saving yet still high performance shower experience.

Fix dripping toilets - a slow barely visible leak can waste over 4,000 litres per year while a visible constant leak can waste over 96,000 litres per year.

Fix dripping taps - a rate of 1 drip per second wastes over 12,000 litres per year.

Always use a full load in the dishwasher and washing machine to ensure they run as efficiently as possible.

Look for washing machines that have a four or more WELS star rating (The Water Efficiency Labeling and Standards Scheme).

The best time to water your garden is before 10am and after 4pm when the sun's rays aren't so strong.

Plant water-conservative plants and use only enough water to match the needs of the plants.

Always use a trigger nozzle so no water is wasted.

Using mulch helps save water by keeping soil cool to reduce evaporation by up to 75%.

Installing a rainwater tank, together with other household water saving devices, can reduce your household water use by up to 25%.

When washing your car at home, park your car on your grass so the runoff soaks back into the ground.

Uncovered pools can lose up to 55,000 litres of water annually, through evaporation, which is a big deal. Using a solar pool cover can help you to stop 97% evaporation.

**Great water saving tips for your garden**



# Flyers

Available in the following sizes:

A5 2pp Flyers printed both sides (2 types shown)

A5 4pp magazine style (shown)

A4 4pp magazine style (same as A5)



Front



Back



Front



Back



Back

Front



Inside

# Posters

A4 printed one side only (2 x types shown)

**SMART WATER ADVICE**

### Showers

10 minute showers can use up to **90 litres** of water

Keep showers to **4 minutes**  
Use a shower timer

Find out more at [www.smartwateradvice.org](http://www.smartwateradvice.org)

Brought to you by **the water conservancy**

**SMART WATER ADVICE**

### Is your toilet leaking?

A continuously running toilet can waste up to **96,000 litres** of water per year.

That's a lot of water, so if your toilet is leaking in your bathroom at home or at work, get it fixed!

Find out more at [www.smartwateradvice.org](http://www.smartwateradvice.org)

Brought to you by **the water conservancy**

**SMART WATER ADVICE**

### Are your Taps Dripping?

A dripping tap can waste up to **12,000 litres** a year.

That's a lot of water, so if your tap is dripping in your kitchen or bathroom at home or at work, get it fixed!

Find out more at [www.smartwateradvice.org](http://www.smartwateradvice.org)

Brought to you by **the water conservancy**

**SMART WATER ADVICE**

### Use a dishwasher at work?

Using a fully loaded dishwasher is more water efficient than washing-up by hand.

Scrape your plates instead of rinsing dishes under the tap.

When washing dishes by hand use washing-up liquid sparingly.

**Only run your dishwasher when it's full**

Find out more at [www.smartwateradvice.org](http://www.smartwateradvice.org)

Brought to you by **the water conservancy**

**SMART WATER ADVICE**

### Are your taps dripping?

A dripping tap can waste up to 12,000 litres a year.

That's a lot of water, so if your tap is dripping in your kitchen or bathroom at work report it!

Please report any leaks to:

Find out more at [www.smartwateradvice.org](http://www.smartwateradvice.org)

Brought to you by **the water conservancy**

**SMART WATER ADVICE**

### Is your toilet leaking?

A continuously leaking toilet can waste up to 96,000 litres a year.

That's a lot of water, so if your toilet is leaking in your bathroom at work report it!

Please report any leaks to:

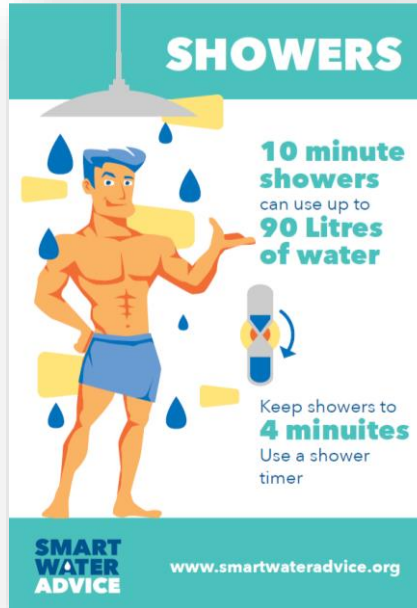
Find out more at [www.smartwateradvice.org](http://www.smartwateradvice.org)

Brought to you by **the water conservancy**

# Postcards

A5 2pp Cards printed both sides  
(As shown)

[View all Smart Water Advice collateral](#)



**SHOWERS**

**10 minute showers can use up to 90 Litres of water**

Keep showers to **4 minutes**  
Use a shower timer

**SMART WATER ADVICE** [www.smartwateradvice.org](http://www.smartwateradvice.org)

The postcard features a muscular man in blue shorts standing under a shower head with water droplets falling around him. A shower timer is shown next to him.



**SMART WATER ADVICE** Find out more at [www.smartwateradvice.org](http://www.smartwateradvice.org)

Brought to you by **the water conservancy**

**1 drip a second wastes more than 12,000 litres**  
Fix dripping taps

**Shower with a 4 minute song to keep your showers short**

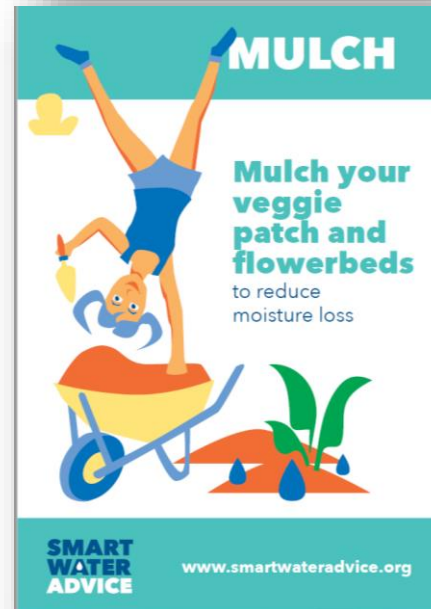
**A leaking toilet can waste more than 96,000 litres a year**  
Fix leaking toilets

**A load of dishes uses about 20 litres of water, much less than hand washing**  
Run your dishwasher full

**Choose the half flush and save up to 1.5 litres of water a flush.**

**A load of laundry uses about 50-150 litres of water, depending on the age and make of machine**  
Run your washing machine full

The postcard is divided into six sections, each with an illustration of a person performing a water-saving action: fixing a tap, showering, flushing a toilet, washing dishes, flushing a toilet, and loading a washing machine.



**MULCH**

**Mulch your veggie patch and flowerbeds to reduce moisture loss**

**SMART WATER ADVICE** [www.smartwateradvice.org](http://www.smartwateradvice.org)

The postcard shows a man in blue shorts performing a handstand on a wheelbarrow filled with mulch. A small plant is growing in a flowerbed next to the wheelbarrow.



**SMART WATER ADVICE** Find out more at [www.smartwateradvice.org](http://www.smartwateradvice.org)

Brought to you by **the water conservancy**

**Plants**  
Save water with a drip watering system instead of sprays

**Install a rainwater tank and connect it to the laundry & toilets**

**Group plants with similar watering needs and water when needed**

**Wash the car on your lawn not on the driveway**

**Use a trigger nozzle on your garden hose**

**Watering**  
Check the weather and only water between 6pm & 10am

The postcard is divided into six sections, each with an illustration of a person performing a water-saving action: watering plants, installing a rainwater tank, watering plants, washing a car, watering a lawn, and watering plants.

# Home Self Audit Worksheets

A4 sheets available as separate PDFs

### Home Water Efficiency Audit

Do you know how much water your household uses? A home water audit like this can help. By monitoring how much water you use and fixing leaks promptly, you can save water and money. Just follow the steps and add the information you collect to the Audit form as you go.

**STEP 1**

#### How Much Water Do We Use?

- Find out where your local water supply comes from by checking your rates notice (water bill).
- Check your water meter which is typically located in the ground outside, towards the front of the property.
- Check how much water your home is using each month by making monthly water meter readings to compare to monthly bills. You can quickly detect any unexplained increases in water use that might indicate a possible leak.

**STEP 2**

#### Where Do We Use Water?

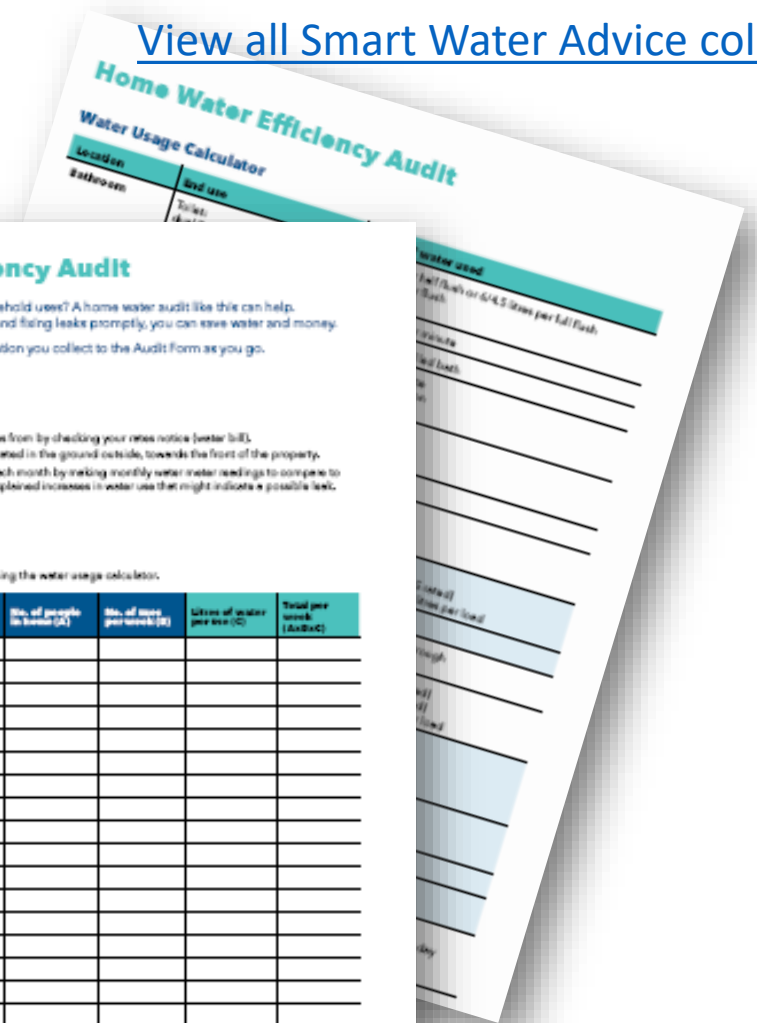
Complete the Household Checklist below using the water usage calculator.

Water Use	No. of people in home (A)	No. of times per week (B)	Litres of water per use (C)	Total per week (AxBxC)
Toilet				
Shower				
Bath				
Teeth cleaning				
Shaving				
Washing hands				
Drinking				
Washing dishes				
Dishwasher				
Washing machine				
Inside cleaning such as showers, floors				
Washing car/bikes/boats				
Washing pets				
Watering gardens/lawns				
Outside cleaning such as driveway, balconies				
Food/water features				
Other				
<b>Total</b>				

You can use additional sheets of paper if you need more space for all your water using places.

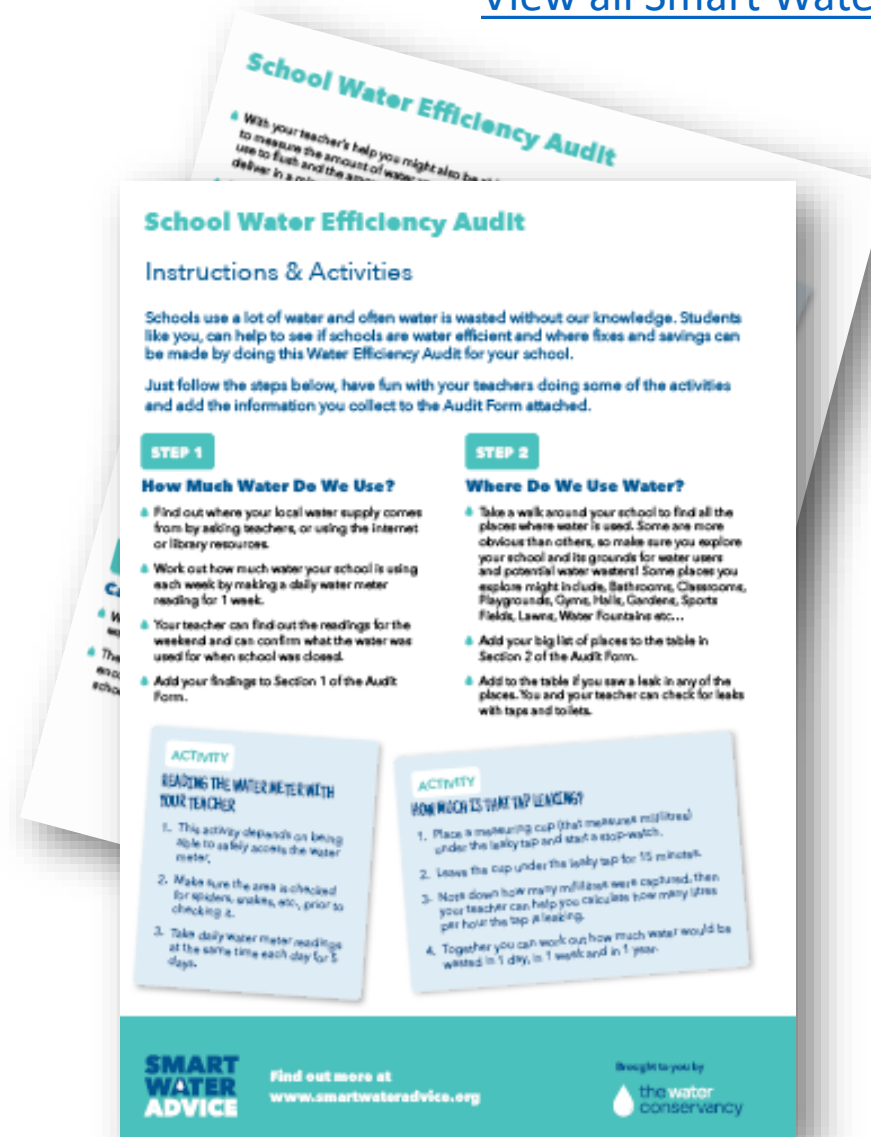
**SMART WATER ADVICE** Find out more at [www.smartwateradvice.org](http://www.smartwateradvice.org)

Brought to you by **the water conservancy**



# School Self Audit Worksheets

A4 sheets available as separate PDFs



## Water Books

Available in the following sizes:

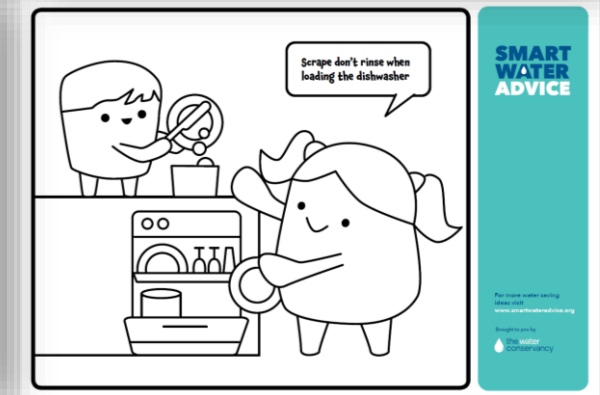
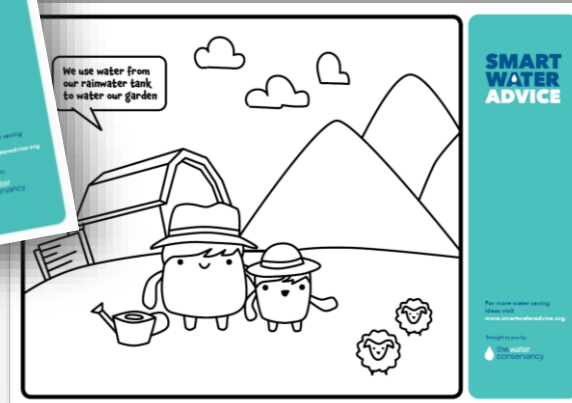
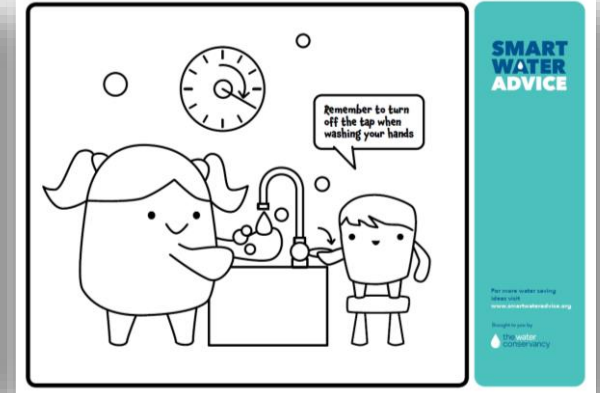
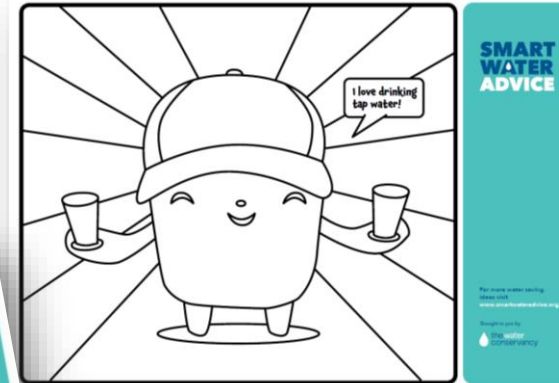
A5 x 4 Booklets (As shown)

A3 x 4 Booklets for teaching purposes



# Colouring In Sheets

A4 sheets available as separate PDFs



# Table Cards

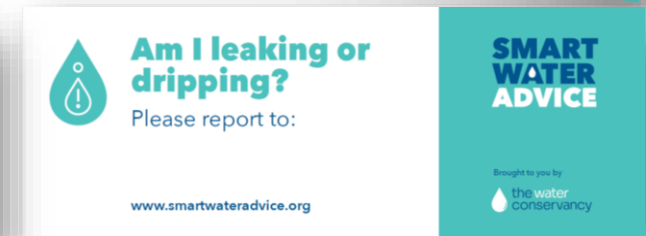
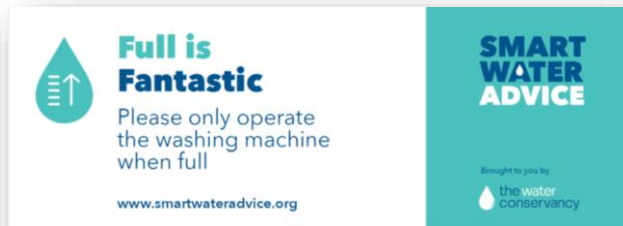
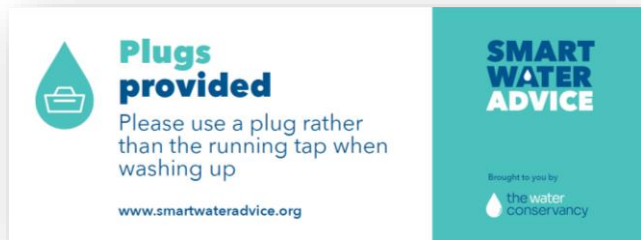
A6 Table/Reception cards printed one side only





# Stickers

8 Types  
50x140mm - 4 Colour Print - one side only  
Cast gloss removable solid back self adhesive



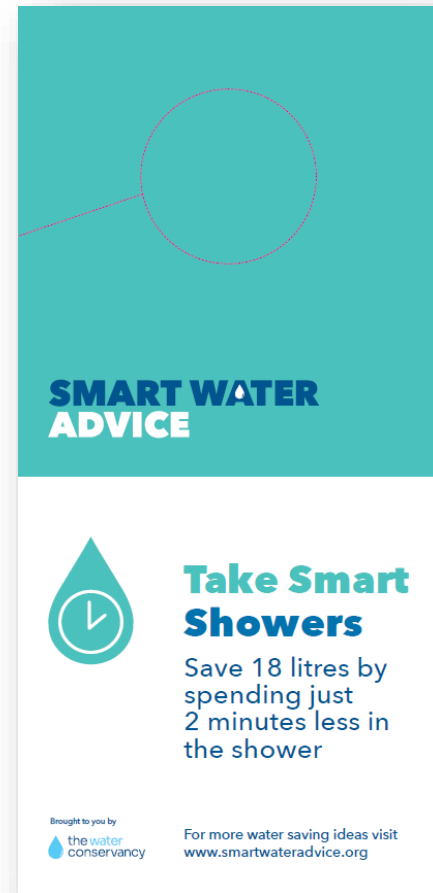
# Door Hangers

4 Colour Print - one side only - Art Board 310gsm

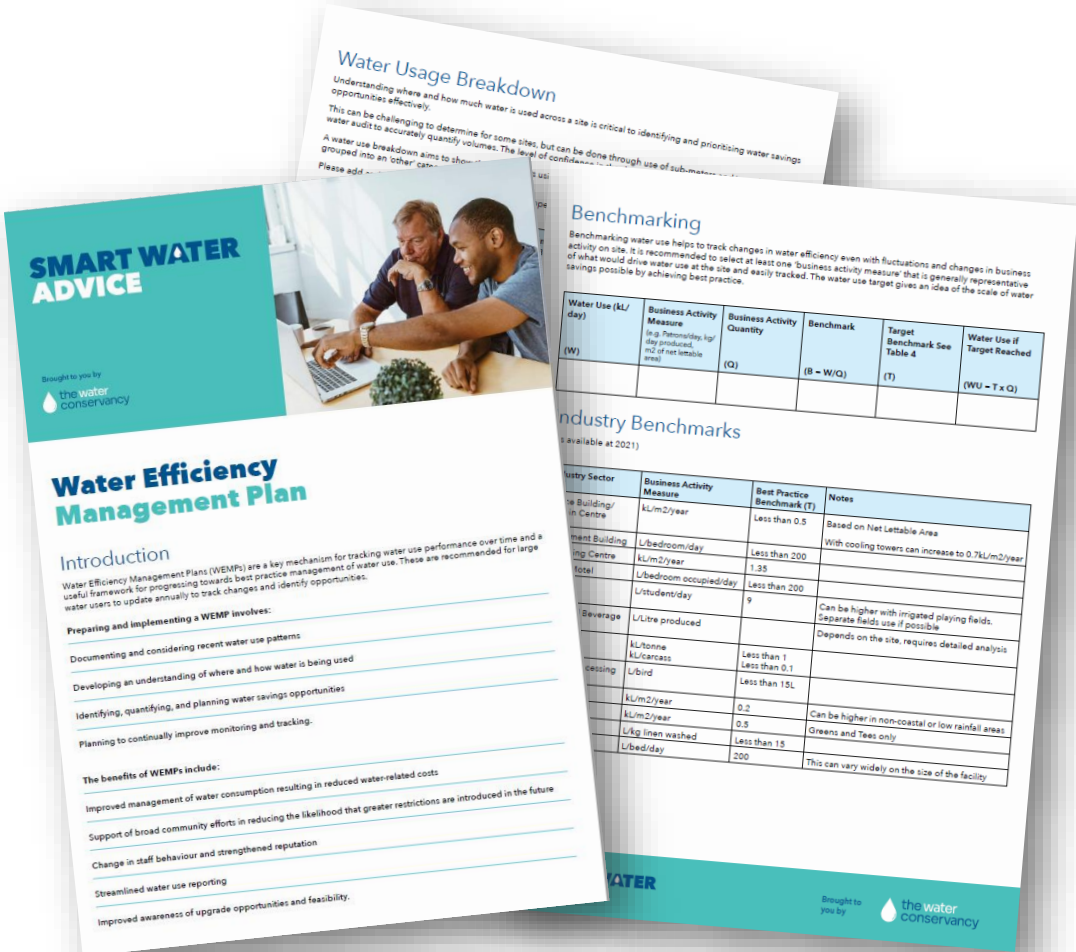


# Shower Hangers

4 Colour Print - one side only - Plastic



# Water Efficiency Management Plan



# Choose Tap Bottles

1 litre glass water bottle supplied in clear with CMYK full colour latex print onto clear CAST vinyl, laminated with matching cast laminate in size 60 x 60mm.

Supplied on premium quality stock finished with a laminate to ensure the stickers are waterproof and will have longevity. Supplied applied bottles.



Choose Tap  
& Chill



**SMART  
WATER  
ADVICE**

[www.tamworth.nsw.gov.au/water-saving-tips](http://www.tamworth.nsw.gov.au/water-saving-tips)

**SMART WATER  
ADVICE**

 the water  
conservancy

# Shower Timers

1 colour print top and bottom with one colour tube print

Note: Detailed Logos are not practical for screen printing

White or blue options available for sand and text on quantities over 10k

Shower Timers can be produced for 3 or minute durations - other timers can be provided on request.

**Note: the stock shower timers are old brand as pictured any new runs will show the new logo**



# Need a hand using the resources?

**SMART WATER**  
**ADVICE**

Any issues, don't hesitate to contact  
Chris Philpot 0422 289 599  
[Chris.philpot@thewaterconservancy.org](mailto:Chris.philpot@thewaterconservancy.org)

  
the water  
conservancy

# The Water Conservancy

## Smart Water Thinking



The Smart Approved WaterMark program independently certifies water efficient products and services in Australia. The label helps consumers to shop wisely.

### SMART WATER ADVICE



This program delivers a customized water efficiency resource for councils and water utilities across Australia. Ready to go tools and materials are rebranded and delivered on behalf of the subscriber.

### WALTER SMART & FRIENDS



These performances and workshops are available for primary schools across Australia. Water knowledge is delivered in a fun, interactive pantomime style. Supported by multimedia to improve water literacy and behaviour.

### WATER NIGHT



Water Night is a national, annual, water awareness initiative. The goal is to help Australians to see how reliant they are on their taps, to educate and inspire behaviour change so we waste less water now and in future.

### SMART WATER SOLUTIONS



This program delivers audits and provides practical suggestions to help larger non-residential businesses to use water more efficiently and to save water energy and money as a result.

## SMART WATER ADVICE